

David L. Alvord, *Mayor*  
Patrick Harris, *Council Member*  
Bradley G. Marlor, *Council Member*  
Donald J. Shelton, *Council Member*  
Tamara Zander, *Council Member*  
Christopher J. Rogers, *Council Member*



PH: 801.446-HELP @SouthJordanUT

Tina Brown, Communications Coordinator/PIO  
Direct: (801) 253-5203, Ext. 1240  
Cell: (801) 300-0042  
[tbrown@sjc.utah.gov](mailto:tbrown@sjc.utah.gov)

FOR IMMEDIATE RELEASE: June 24, 2016

## **Fire Restrictions for South Jordan City**

**SOUTH JORDAN, UT** – Fire restrictions are in place for South Jordan City. The danger of fire in wildland urban interface areas is expected to be high this season in and around the City of South Jordan. Fireworks, lighters, matches or other items and/or devices that produce sparks or an open flame are strictly prohibited within the natural vegetation border of the Bingham Creek and Jordan River Parkway open space and trail systems, except with a permit issued from the City.

In addition, the discharge of fireworks is prohibited in the following areas:

- Within 200 feet of the natural vegetation border of the Bingham Creek and Jordan River Parkway open space and trail systems.
- Within 25 feet of undeveloped wildland and containing dry vegetation including brush, grasses, weeds, or other combustible vegetation.

If you witness any violations of these restrictions you are encouraged to contact the South Jordan City Police Department at (801) 840-4000.

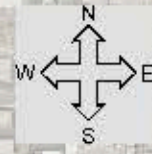
Click here to view maps <http://www.sjc.utah.gov/> where fire restrictions are in place.

###

*The City of South Jordan, one of the fastest growing cities in the United States, is located 20 miles southwest of Salt Lake City, and home to more than 66,000 residents. In 2010, 2012, and 2014, South Jordan was named one of the Top 20 “Best Place to Live in America” by Money Magazine.*

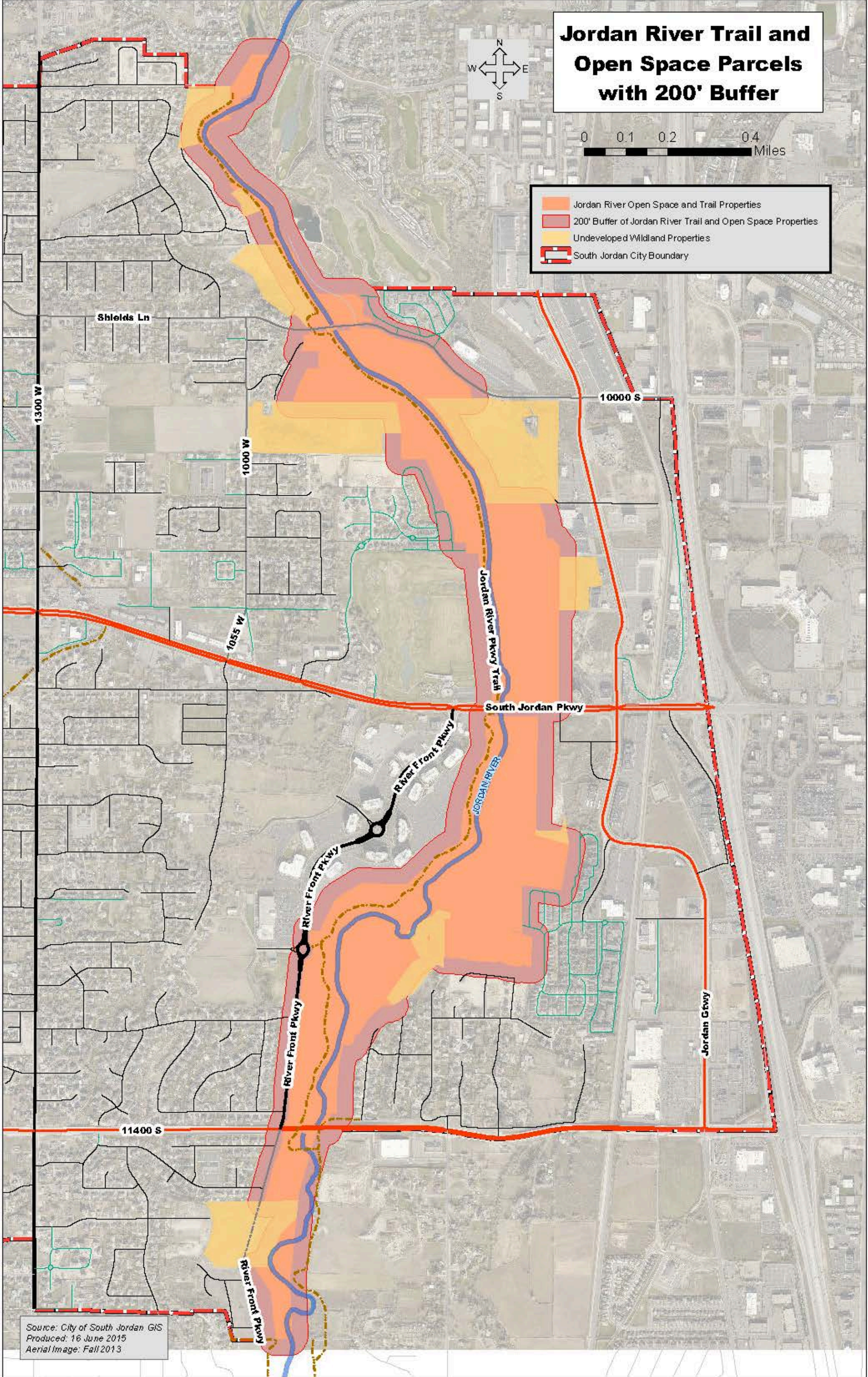


# Jordan River Trail and Open Space Parcels with 200' Buffer



0 0.1 0.2 0.4 Miles

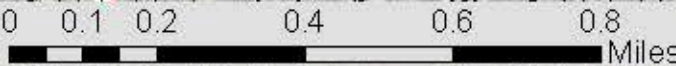
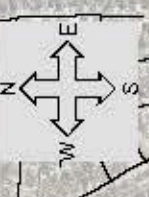
- Jordan River Open Space and Trail Properties
- 200' Buffer of Jordan River Trail and Open Space Properties
- Undeveloped Wildland Properties
- South Jordan City Boundary



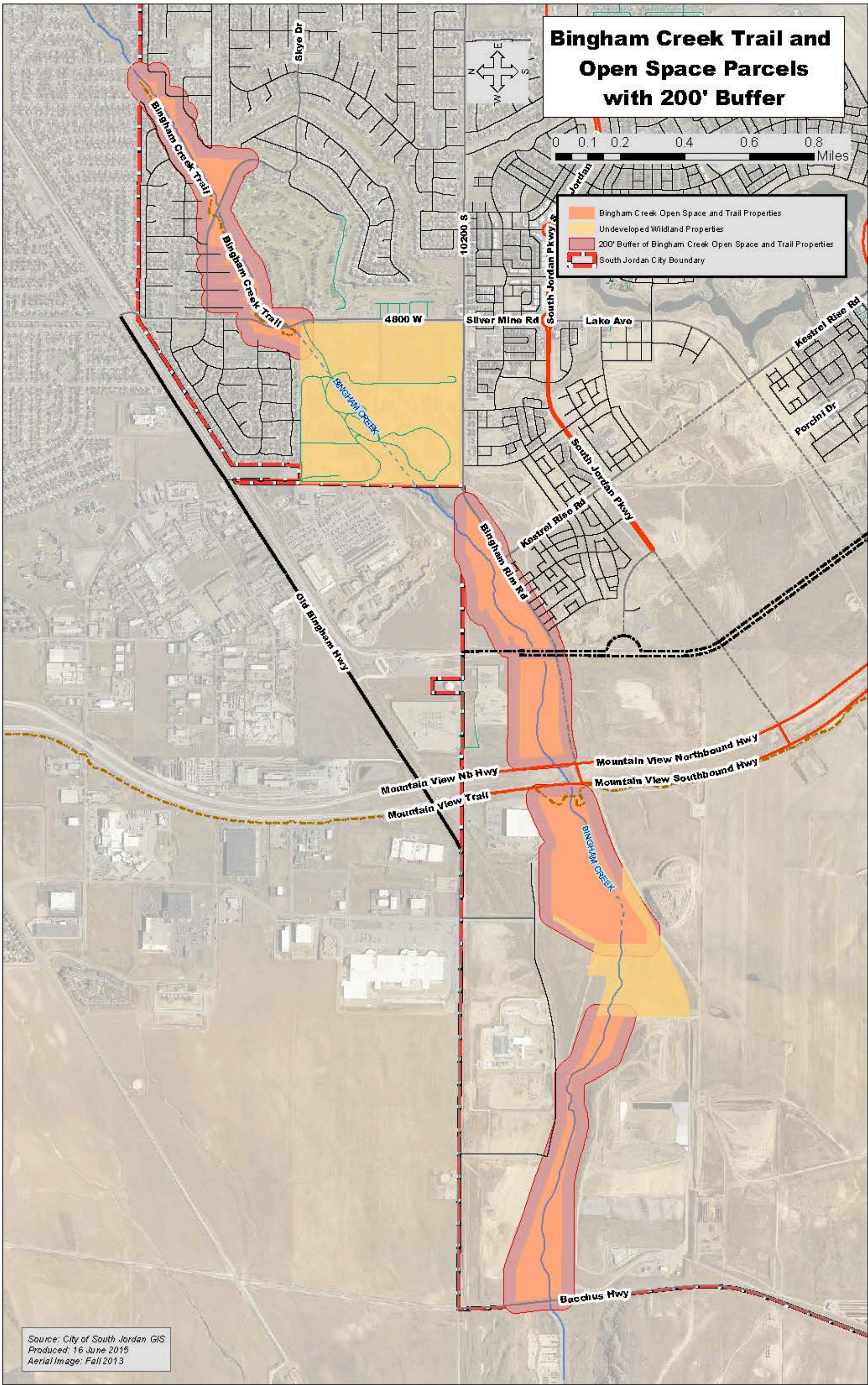
Source: City of South Jordan GIS  
Produced: 16 June 2015  
Aerial Image: Fall 2013



# Bingham Creek Trail and Open Space Parcels with 200' Buffer



- Bingham Creek Open Space and Trail Properties
- Undeveloped Wildland Properties
- 200' Buffer of Bingham Creek Open Space and Trail Properties
- South Jordan City Boundary



Source: City of South Jordan GIS  
Produced: 16 June 2015  
Aerial Image: Fall 2013